



**Installation Guide for
Microsoft® SQL Server 2008 R2 Express®**

Configuring the database engine

1. Enabling Remote Connections for LAN Purpose

You must ensure that the SQL Server instance will allow Remote Connections, otherwise your workstations will not be able to connect to the server.

To do this run **SQL Server Management Studio**.

Click on Start > All Programs >

SQL Server 2008 R2 > **SQL Server Management Studio**.

Enter the Server Name (server name and instance name) that you created earlier.

Change the Authentication mode to **SQL Server Authentication**.

Use the 'sa' Login and enter the password that you created earlier.

Click on the **Connect** button.

Right click the SQL Server instance from the Object Explorer pane, (see Figure 2) and **choose Facets**.

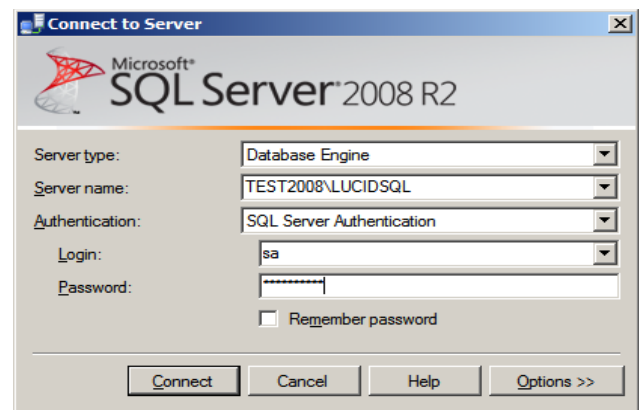


Figure 1

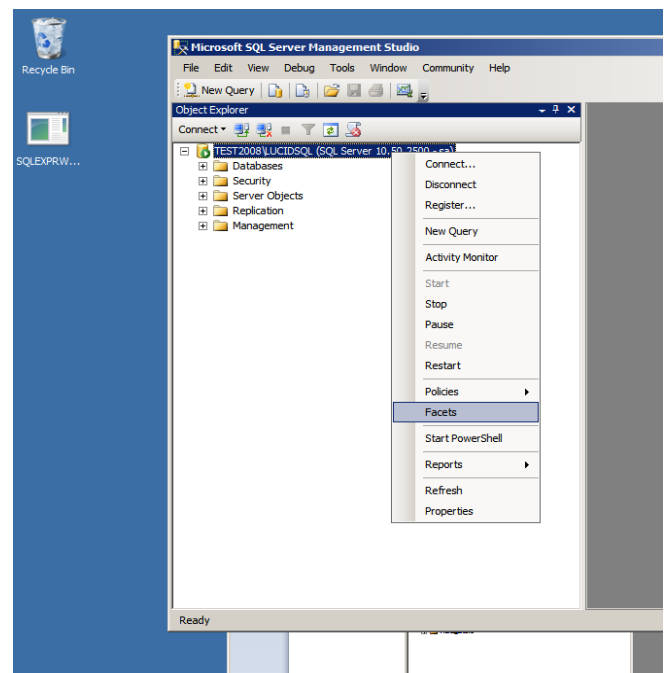


Figure 2

Change the Facet to Server Configuration.
Ensure that RemoteAccessEnabled is set to True.

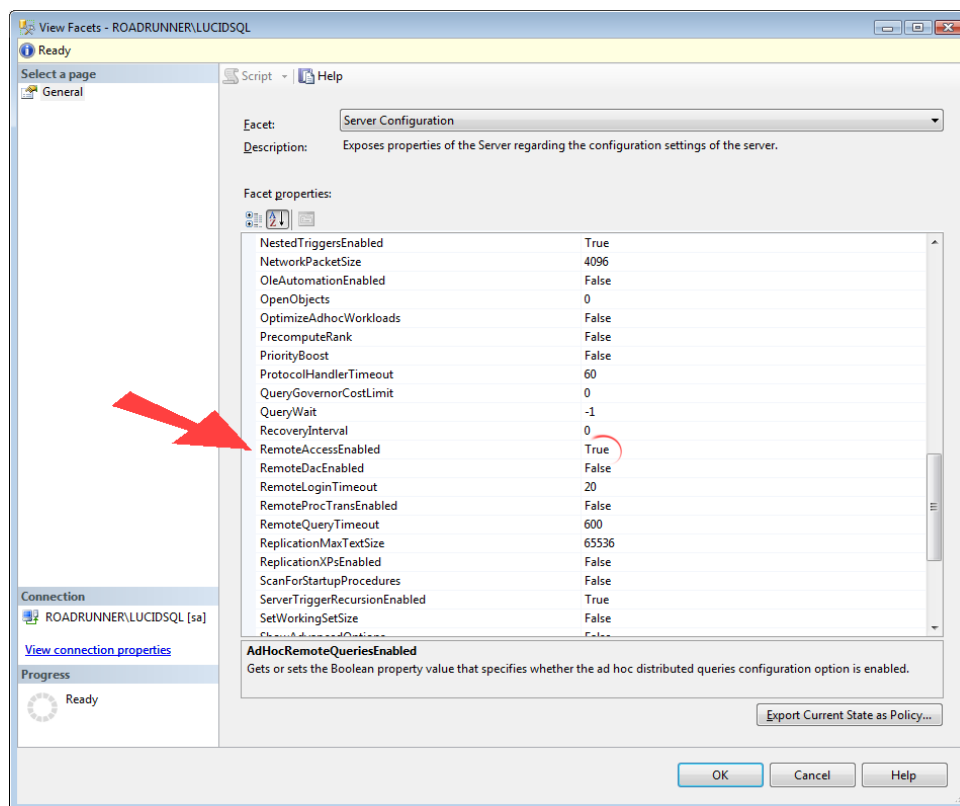


Figure 3 - RemoteAccessEnabled Option

Click the OK button and then close SQL Server Management Studio.

2. SQL Server Configuration Manager

This tool is installed onto the computer's *All Programs* menu and is used to enable SQL services and protocols. Find it from the Programs listing under the group called Microsoft SQL Server 2008 R2.

Having launched the tool (Figure 4) you will see the services.

The two services: **SQL Server** and **SQL Server Browser** need to be enabled and to be running. **Note:** you cannot start the SQL Server Agent service in the Express edition.

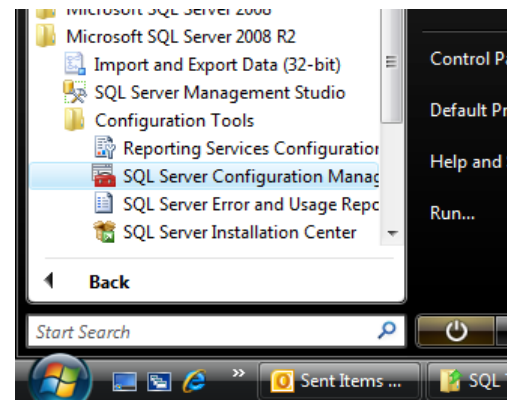


Figure 4 - Locating the SQL Server Configuration Manager

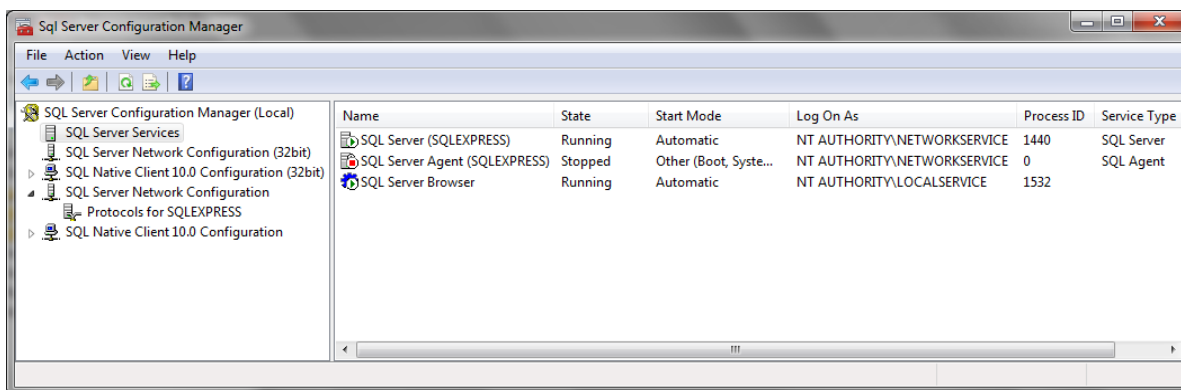


Figure 5 - Viewing Services

If you first look at the settings for SQL Server 2008 Services, both the *SQL Server Browser* and the *SQL Server* services for the database instance are **not enabled** by default after installation.

They can be started or stopped or otherwise configured by right-mouse clicking over them. Figure 5 shows that both services have been configured to run automatically when the computer is started.

To **Stop**, **Start** or **Restart** a service, right mouse click on the item under the column header 'State' and use the context menu which appears to **Stop**, **Start** or **Restart** the service.

If you need to change the account under which you are running a service, right mouse click on the item beneath the column header 'Log On As' and select Properties.

Next, check that the protocols are enabled. It is recommended that you enable TCP/IP and Named Pipes for both the SQL Server instance (see Figure 6) and the SQL Native Client 10.0 (see Figure 7). Note: If you have installed SQL Server 64 bit edition, there will be two SQL Native Clients installed, a 32 bit and the default 64 bit.

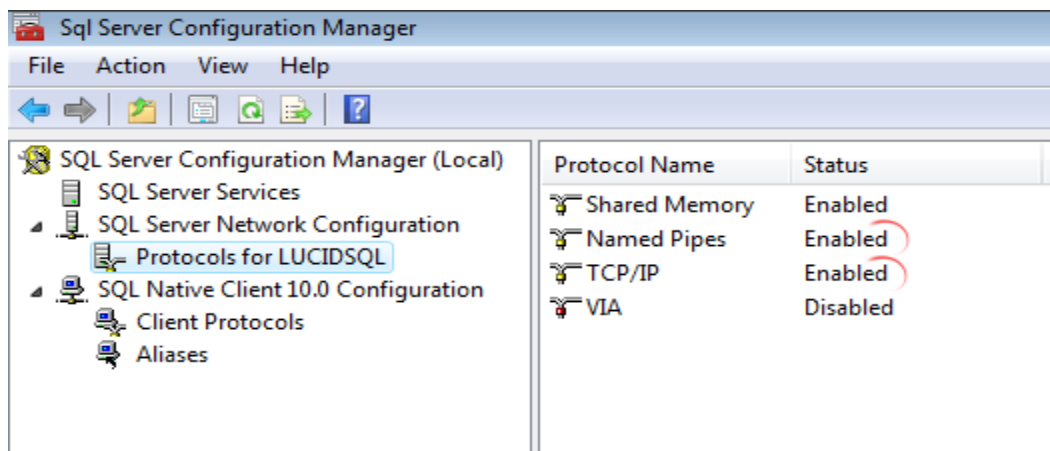


Figure 6 - Enable protocols for the SQL Server Instance

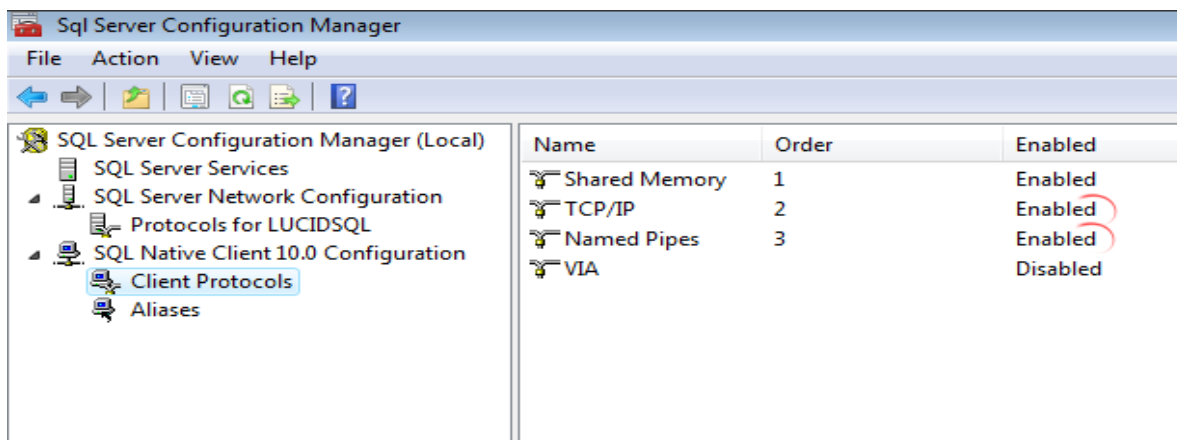


Figure 7 - Enabled protocols for SQL Native Client 10.0

After changing the protocols, restart both SQL Server and SQL Server Browser services as explained above.

Finally, you will need to make some changes to your firewall to allow SQL Server to communicate with client machines, see Microsoft page

<http://msdn.microsoft.com/en-us/library/ms175043.aspx>