



Service begins here...

SAG INFOTECH PVT. LTD.

**Import facility In Revised Scheduled
VI Format**

Import facility procedure

For preparing final accounts you have to insert trial balance data for this we are providing you import facility from various software's.

The screenshot displays the main menu of the SAG Genius software. On the left, a vertical list of menu items includes: Client Manager, Balance Sheet / 3CD, Income Tax, CMA/EMI, Forms Manager, TDS, Service Tax, Billing, Wealth Tax, Fringe Benefit Tax, AIR, BulK SMS, BulK Email, Other Utilities, and Help. On the right, a sub-menu titled 'Genius' is open, showing options: Data Transfer/Import TB (highlighted with a red oval and a callout), Trial Balance, Balance Sheet / 3CD, and Cash / Fund Flow. A callout box with a cloud-like border points to the 'Data Transfer/Import TB' option, containing the text: 'Use this option to Import data of Trial balance from various software's.'

Genius

Data Transfer/Import TB

Trial Balance

Balance Sheet / 3CD

Cash / Fund Flow

Use this option to Import data of Trial balance from various software's.

Rights Reserved by SAG Infotech.

Import facility procedure

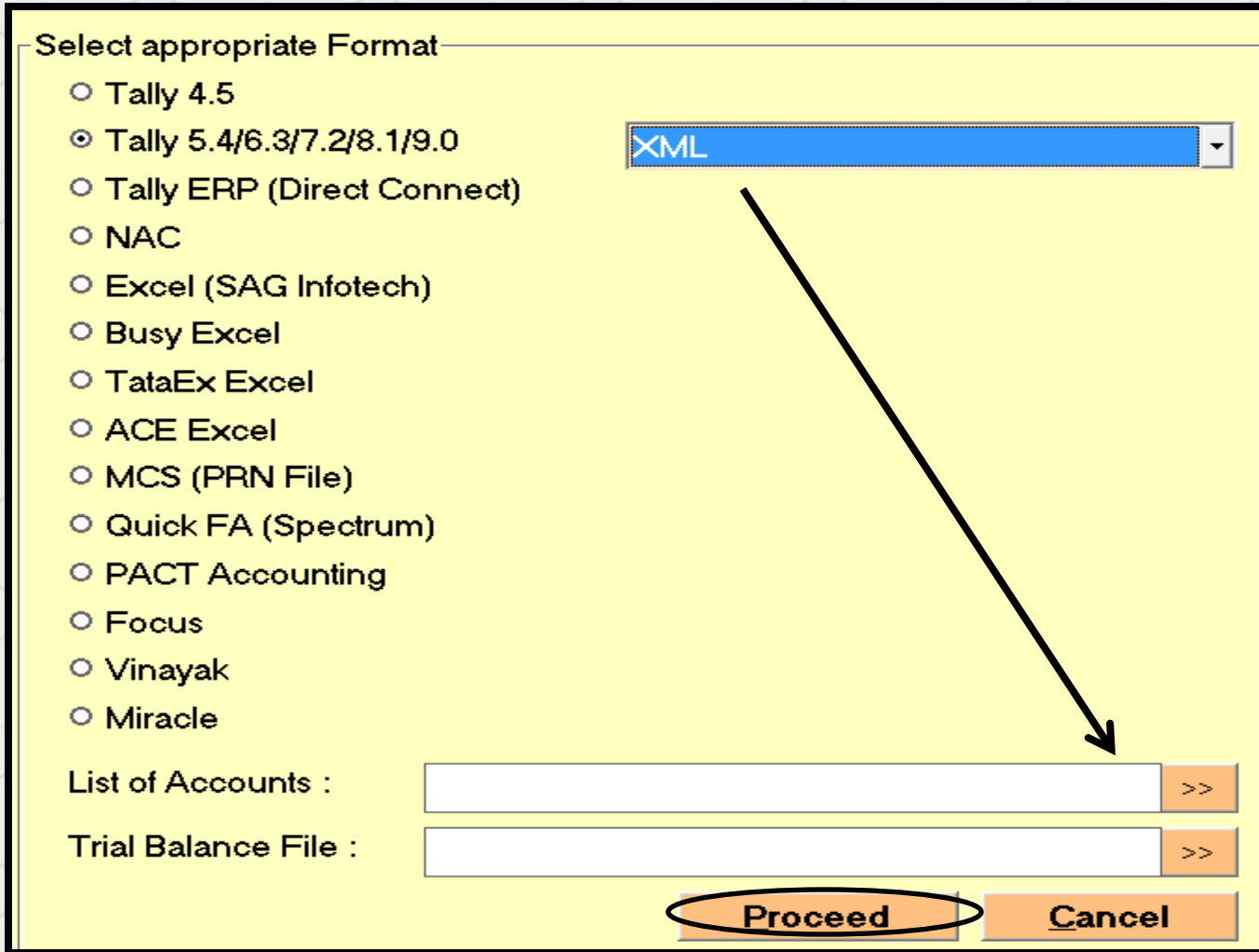
These are the list of various software from which you can easily import trial balance

Select appropriate Format

- Tally 4.5
- Tally 5.4/6.3/7.2/8.1/9.0
- Tally ERP (Direct Connect)
- NAC
- Excel (SAG Infotech)
- Busy Excel
- TataEx Excel
- ACE Excel
- MCS (PRN File)
- Quick FA (Spectrum)
- PACT Accounting
- Focus
- Vinayak
- Miracle

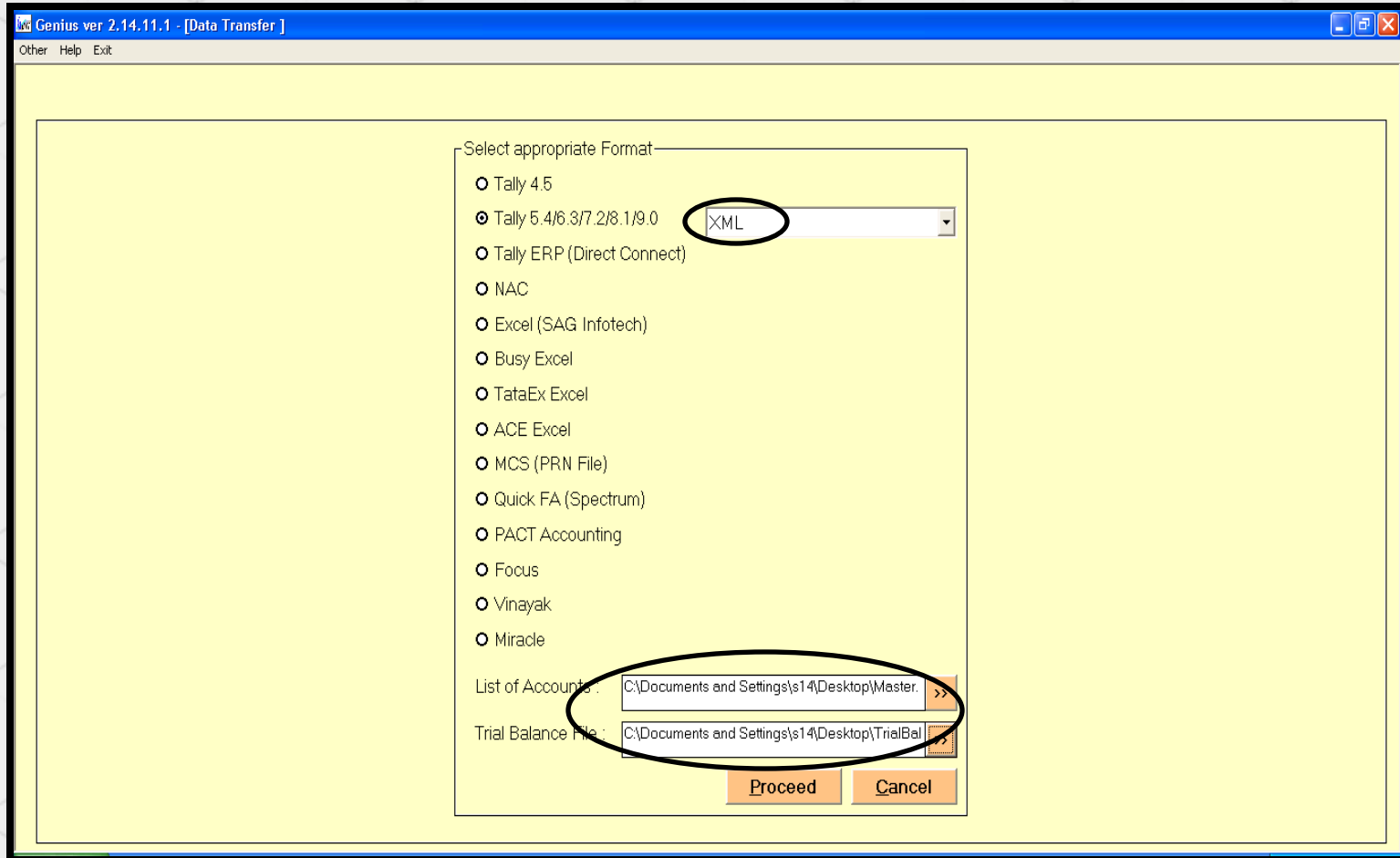
List of Accounts : >>

Trial Balance File : >>



Import facility procedure

If you want to import from tally then you have to select XML files of list of accounts /Master data and trial balance data



NOTE : file should be in XML/SDF format then its properly import

Import facility procedure

Successful creation of trial balance:
As per XML files Data will be Imported in Trial balance

Genius ver 2.14.11.1 - [Trial Balance of ACG ARTS AND PROPERTIES PRIVATE LIMITED for the Period 01/04/2014 - 31/03/2015]

Insert Alter Delete Adjustment Entries Group Master Group List Export Year Options Ledger List Sort Options Summarized Details Help Exit

PARTICULARS	GROUP	Amount	DR/CR
ADVANCE SALES TAX	LOANS AND ADVANCES (ASSETS)	570777.00	DR

Particulars /	Group	Amount	Dr/Cr
ADVANCE SALES TAX	LOANS AND ADVANCES (ASSETS)	570777.00	DR
AIR CONDITIONER	FIXED ASSETS	4470.00	DR
BANK CHARGES	INDIRECT EXPENSES	10673.49	DR
BANK INTEREST	INDIRECT INCOMES	8335.00	CR
BOB	CASH AND BANK	24848.63	DR
CAPITAL ACCOUNT	CAPITAL	970434.53	CR
CAR WAGNOR	FIXED ASSETS	85460.00	DR
CASH	CASH AND BANK	41639.00	DR
CHINNA REDDAPPA	SUNDRY CREDITORS	17779.00	CR
COMPUTER	FIXED ASSETS	16554.00	DR
COMPUTER SOFTWARE	FIXED ASSETS	10926.00	DR
DEPRECIATION	INDIRECT EXPENSES	61705.00	DR
DSC EXEMPTED	SALES	388580.00	CR
ELECTRICITY EXPENSES	INDIRECT EXPENSES	17468.00	DR
EPABX	FIXED ASSETS	2917.00	DR
EXPORT SALES	INDIRECT INCOMES	2418982.87	CR
FURNITURE	FIXED ASSETS	1432.00	DR
HANDICAM	FIXED ASSETS	8670.00	DR
ICICI BANK LTD	CASH AND BANK	70797.46	DR
INCOME FROM MUTUAL FUND	INDIRECT INCOMES	168.23	CR
INVERTOR	FIXED ASSETS	2632.00	DR
MACHINERY	FIXED ASSETS	4150.00	DR

Particulars	Amount (Rs.)
Opening Stock	0.00
Purchases	5,88,030.00
Direct Expenses	0.00
Less : Closing Stock	0.00
Cost of Goods Sold	5,88,030.00
Sales	4,08,580.00
Gross Profit(Loss)	(1,79,450.00)
Expenses	22,11,317.49
Incomes	26,40,547.98
Net Profit(Loss)	2,49,780.47
Profit Tr. to B/S	2,49,780.47
Total Assets	12,67,702.00
Total Liabilities	12,67,702.00
Current Assets	11,23,807.00
Current Liabilities	47,487.00
Working Capital	10,76,120.00
GP Rate	(43.92)
NP Rate	61.13
Current Ratio	23.66

Total Debit Total Credit Difference

Closing Stock Manufacturing Grouping

This is your Trial balance Data which has been imported by using options available

Import facility procedure

If you want to prepare final accounts as per new Revised Schedule VI format then after importing data in trial balance you have to go balance sheet option first and select import data from trial balance.

KAMLESH PRASAD SHARAMA

Modify Trial Balance

3CD Filing Status Report

Form 3CA - 3CD (e-Filing) Old

Form 3CB - 3CD (e-Filing) Old

Other Audit Forms (e-Filing)

Online Activities @ ITD Login (CA)

Online Activities @ ITD Login (Client)

Notice Director's Report

Company Auditor Report Wizard

CARO Wizard

Balance Sheet

Profit and Loss Account

Trading Account

Continuous Final Accounts Printing

Schedules/Lists

Notes on Account Other Disclosures

Balance Sheet Abstract

Ratio

Annual Report

Receipt & Payment Account

Miscellaneous Certificates & Letters

Date of Balance Sheet / /

Balance Sheet

Particular	✓	Notes	Current
I. EQUITY AND LIABILITIES			
(1) Shareholders' funds			
(a) Share capital	✓	2.1	0.00
(b) Reserves and surplus	✓	2.2	0.00
(c) Money received against share warrants	✓	2.3	0.00
(2) Share application money pending allotment	✓	2.4	0.00
(3) Non-current liabilities			
(a) Long-term borrowings	✓	2.5	0.00
(b) Deferred tax liabilities (Net)	✓	2.6	0.00
(c) Other Long term liabilities	✓	2.7	0.00
(d) Long-term provisions	✓	2.8	0.00
(4) Current liabilities			
(a) Short-term borrowings	✓	2.9	0.00
(b) Trade payables	✓	3.0	0.00
(c) Other current liabilities	✓	3.1	0.00
(d) Short-term provisions	✓	3.2	0.00
TOTAL			0.00
II. ASSETS			
Non-current assets			
(i) Fixed assets			
(i) Tangible assets	✓	3.3	0.00
(ii) Intangible assets	✓	3.4	0.00
(iii) Capital work-in-progress	✓	3.5	0.00
(iv) Intangible assets under development	✓	3.6	0.00
(b) Non-current investments	✓	3.7	0.00
(c) Deferred tax assets (net)	✓	3.8	0.00
(d) Long-term loans and advances	✓	3.9	0.00
(e) Other non-current assets	✓	4.0	0.00
(ii) Current assets			

Contingent liabilities and commitments

Profit & Loss A/c Import Previous **Setup**

Import from Trial Balance Print Print List Back

NOTE: Other option like “setup” and “print” will also be helpful in preparing final accounts

Import facility procedure

Step -1: Trial Balance to Balance sheet Group Mapping : You have to map particulars and groups as per Revised Schedule VI Groups.

Genius ver 2.14.11.1 - [Import Data From Trial Balance]

Step -1 Trial Balance to Balance Sheet Group Mapping

Group [All] Dr / Cr [All] View Hierarchy

Unmapped Mapped All SchVI Group [All]

Particular	Group	Sch VI Group	Particular
ACCOUNTANCY CHARGES	INDIRECT EXPENSES	Other Expenses	Balance Sheet
ACCOUNTANCY CHARGES PAYABLE	PROVISIONS	Provision	Profit and Loss
ADVANCE INCOME TAX	LOANS AND ADVANCES (ASSETS)	Loans and advances	Revenue from operations
ADVERTISEMENT EXPENSES	INDIRECT EXPENSES	Other Expenses	Other income
AIR CONDITIONER	FIXED ASSETS	Tangible Assets	Cost of material consumed
AIRTEL	SUNDRY CREDITORS	others	Purchase of stock-in-trade
AKM MEHRASONS JEWELLERS(G-25)	SUNDRY DEBTORS-OTHERS	Secured Considered	Changes in inventory
AKM MEHRASONS JEWELLERS(UG-25)	SUNDRY DEBTORS-OTHERS	Secured Considered	Employee benefits expense
AUDITORS REMUNERATION	INDIRECT EXPENSES	Other Expenses	Finance costs
AUDITORS REMUNERATION PAYABLE	PROVISIONS	Provision	Depreciation and amortisation expense
BANK CHARGES	INDIRECT EXPENSES	Other Expenses	Other expenses
BUSINESS PROMOTION	INDIRECT EXPENSES	Other Expenses	Manufacturing Service Costs Expense
CAR & SCOOTOR INSURANCE	INDIRECT EXPENSES	Other Expenses	Administrative and General Expenses
CARS	FIXED ASSETS	Tangible Assets	Selling Distribution Expenses
CASH	CASH AND BANK	Cash in Hand	Provisions
COMPUTER	FIXED ASSETS	Tangible Assets	Write off Assets and Liabilities
COMPUTER MAINTENANCE & UPGRADATION EXPENSES	INDIRECT EXPENSES	Other Expenses	Research and Development Expenses
CONSUMABLES EXPENSES	DIRECT EXPENSES	Manufacturing Service Costs Expense	Contract Cost
CONVEYANCE	INDIRECT EXPENSES	Other Expenses	Other Adjustments
CORPORATION BANK CA 3411	CASH AND BANK	Cash in Hand	Other Expenses
CORPORATION BANK CA 6019	CASH AND BANK	Cash in Hand	Exceptional Items
CORPORATION BANK CA 6095	CASH AND BANK	Cash in Hand	Extraordinary items
CYCLE	FIXED ASSETS	Tangible Assets	Prior period items
D VAT INPUT WRONGLY CLAIMED NOW PAID	INDIRECT EXPENSES	Other Expenses	Tax expense
DIE PRESS	FIXED ASSETS	Tangible Assets	Profit/(loss) from discontinuing operation
DIRECTOR REMUNERATION PAYABLE	PROVISIONS	Provision	Tax expense of discontinuing operation
			Earning per share

Next Exit

Genius ver 2.14.11.1 - [Import Data From Trial Balance]

Step -1 Trial Balance to Balance Sheet Group Mapping

Group [All] Dr / Cr [All] View Hierarchy

Unmapped Mapped All SchVI Group [All]

Particular	Group	Sch VI Group	Particular
ACCOUNTANCY CHARGES	INDIRECT EXPENSES	Other Expenses	Balance Sheet
ACCOUNTANCY CHARGES PAYABLE	PROVISIONS	Provision	Profit and Loss
ADVANCE INCOME TAX	LOANS AND ADVANCES (ASSETS)	Loans and advances to others	Revenue from operations
ADVERTISEMENT EXPENSES	INDIRECT EXPENSES	Other Expenses	Other income
AIR CONDITIONER	FIXED ASSETS	Tangible Assets	Cost of material consumed
AIRTEL	SUNDRY CREDITORS	others	Purchase of stock-in-trade
AKM MEHRASONS JEWELLERS(G-25)	SUNDRY DEBTORS-OTHERS	Secured Considered Goods	Changes in inventory
AKM MEHRASONS JEWELLERS(UG-25)	SUNDRY DEBTORS-OTHERS	Secured Considered Goods	Employee benefits expense
AUDITORS REMUNERATION	INDIRECT EXPENSES	Other Expenses	Finance costs
AUDITORS REMUNERATION PAYABLE	PROVISIONS	Provision	Depreciation and amortisation expense
BANK CHARGES	INDIRECT EXPENSES	Other Expenses	Other expenses
BUSINESS PROMOTION	INDIRECT EXPENSES	Other Expenses	Manufacturing Service Costs Expense
CAR & SCOOTOR INSURANCE	INDIRECT EXPENSES	Other Expenses	Administrative and General Expenses
CARS	FIXED ASSETS	Tangible Assets	Selling Distribution Expenses
CASH	CASH AND BANK	Cash in Hand	Provisions
COMPUTER	FIXED ASSETS	Tangible Assets	Write off Assets and Liabilities
COMPUTER MAINTENANCE & UPGRADATION EXPENSES	INDIRECT EXPENSES	Other Expenses	Research and Development Expenses
CONSUMABLES EXPENSES	DIRECT EXPENSES	Manufacturing Service Costs Expenses	Contract Cost
CONVEYANCE	INDIRECT EXPENSES	Other Expenses	Other Adjustments
CORPORATION BANK CA 3411	CASH AND BANK	Cash in Hand	Other Expenses
CORPORATION BANK CA 6019	CASH AND BANK	Cash in Hand	Exceptional Items
CORPORATION BANK CA 6095	CASH AND BANK	Cash in Hand	Extraordinary items
CYCLE	FIXED ASSETS	Tangible Assets	Prior period items
D VAT INPUT WRONGLY CLAIMED NOW PAID	INDIRECT EXPENSES	Other Expenses	Tax expense
DIE PRESS	FIXED ASSETS	Tangible Assets	Profit/(loss) from discontinuing operation
DIRECTOR REMUNERATION PAYABLE	PROVISIONS	Provision	Tax expense of discontinuing operation
DIRECTORS REMUNERATION	INDIRECT EXPENSES	Other Expenses	Earning per share
DVAT CARRIED FORWARD	LOANS AND ADVANCES (ASSETS)	Loans and advances to others	

Next Exit

You have to map particulars and groups to revised schedule VI Groups.

Import facility procedure

Step-2 Amount Mapping : According to step first software will import data as per mapping then user has to classify the amount under heading and subheadings of the group . We have provide drag facility also so that you can drag fields if you want to change categories of groups and headings

Genius ver 2.14.11.1 - [Import Data From Trial Balance]

Amount Mapping

All Filled Blank

Show / Hide Columns

Particular	TB Amount	Schedule Amt.	Difference	IT Group	Amount	
					Non Current	Cu
Other Receipts						
Share Other Income Joint Ventures						
LABOUR CHARGES RECEIVED	295887.00					
SHORT & EXCESS	13.84					
Adjustments						
Tax Deducted at Sources						
Other Allowances Deduction						
PROFIT & LOSS A/C	-20341.00					
Cost of material consumed	0.00	0.00	0.00			
Purchase of stock-in-trade						
Stock in Trade						
Finished Goods						
PURCHASE LOCAL 1%	434333208.00					
PURCHASE LOCAL-OTHERS	3811005.00					
PURCHASE-INTERSTATE	6862884.01					
STOCK TAKEN OVER FROM BHOLA JEWELL	4186415.00					
Changes in inventory						
Stock in Trade						
Finished Goods						
Work in Progress						
Other						
Increase Decrease in Excise Duty Inventories						
Share Materials Stocks Joint Ventures						
Employee benefits expense						
Salary, Wages & Bonus						
Contribution to Gratuity						
Contribution to Pension Scheme						

Trial Balance Items Drag and Drop Particulars to change groups

Non Editable Cells Amount is to be classified

Save Draft Transfer to Final Accounts Exit

Load Draft Load from Final Accounts Back

Auto Hide Columns

This is the final mapped data

Import facility procedure

Step 3: Amount to be adjusted: Yellow colour field is to classify the amount into sub groups like current and Non current.

Genius ver 2.14.11.1 - [Import Data From Trial Balance]

Amount Mapping
 All Filled Blank Show / Hide Columns

Particular	TB Amount	Schedule Amt.	Difference	IT Group	Amount	
					Non Current	Current
ISWARCHAND BANDMAL BURAD	2684934.00					
J.K. ENTERPRISE	327550.00					
J.R. ENTERPRISE	5653780.00					
JASRAJ BANDMAL BURAD HUF	1869237.00					
JASRAJ BANDMAL BURAD IND.	1249355.00					
KANTILAL JASRAJ BURAD	1659554.00					
KANTILAL MITTULKUMAR HUF	780660.00					
M/S RAJENDRAKUMAR JASRAJ	361170.00					
M/S SURESHKUMAR KUNJANKUMAR	4129369.00					
MANJUDEVI RAJENDRAKUMAR BURAD	546488.00					
MEENADEV I SURESHKUMAR BURAD	1229601.00					
PUSHPADEVI KANTILAL BURAD	1546107.00					
RAHUL TEXTILE	3398292.00					
RAJENDRA ENTERPRISE	4358785.00					
RAJENDRAKUMAR JASRAJ BURAD	1250547.00					
RAJENDRKUMAR RAHULKUMAR	654157.00					
ROOPAMDEVI JASRAJ BURAD	1366224.00					
SAMPATRAJ ISWARCHAND BURAD	1281726.00					
SURESHKUMAR KUNJANKUMAR H	381496.00					
UPASHNAKUMARI D/O KANTILAL	57618.00					
Deferred Tax						
Assets						
Employee Benefits						
Expenditure Disallowances						
Fixed Assets						
Non current						
Provision for Doubtful Debts						

Trial Balance Items **Drag and Drop Particulars to change groups** Save Draft Transfer to Final Accounts Exit

Non Editable Cells **Amount is to be classified** Load Draft Load from Final Accounts Back

Auto Hide Columns

Import facility procedure

If particulars is related to long term: then you have to classify from this long term part that how much amount is related to current and what proportion is related to non current.

Genius ver 2.14.11.1 - [Import Data From Trial Balance]

Amount Mapping
 All Filled Blank Show / Hide Columns

Particular	TB Amount	Schedule Amt.	Amount		Secured		Unsecured
			Current	Total	Non Current	Current	Total
ISWARCHAND BANDMAL BURAD	2684934.00						2684934.00
J.K. ENTERPRISE	327550.00						327550.00
J.R. ENTERPRISE	5653780.00						5653780.00
JASRAJ BANDMAL BURAD HUF	1869237.00						1869237.00
JASRAJ BANDMAL BURAD IND.	1249355.00						1249355.00
KANTILAL JASRAJ BURAD	1659554.00						1659554.00
KANTILAL MITTULKUMAR HUF	780660.00						780660.00
M/S RAJENDRAKUMAR JASRAJ	361170.00						361170.00
M/S SURESHKUMAR KUNJANKUMAR	4129369.00						4129369.00
MANJUDEVI RAJENDRAKUMAR BURAD	546488.00						546488.00
MEENADEVI SURESHKUMAR BURAD	1229601.00						1229601.00
PUSHPADEVI KANTILAL BURAD	1546107.00						1546107.00
RAHUL TEXTILE	3398292.00						3398292.00
RAJENDRA ENTERPRISE	4358785.00						4358785.00
RAJENDRAKUMAR JASRAJ BURAD	1250547.00						1250547.00
RAJENDRUMAR RAHULKUMAR	654157.00						654157.00
ROOPAMDEVI JASRAJ BURAD	1366224.00						1366224.00
SAMPATRAJ ISWARCHAND BURAD	1281726.00						1281726.00
SURESHKUMAR KUNJANKUMAR H	381496.00						381496.00
UPASHNAKUMARI D/O KANTILAL	57618.00						57618.00
Deferred Tax							
Assets							
Employee Benefits							
Expenditure Disallowances							
Fixed Assets							
Non current							

Trial Balance Items | Drag and Drop Particulars to change groups | Save Draft | Transfer to Final Accounts | Exit

Non Editable Cells | Amount is to be classified | Load Draft | Load from Final Accounts | Back

Auto Hide Columns

Genius ver 2.14.11.1 - [Import Data From Trial Balance]

Amount Mapping
 All Filled Blank Show / Hide Columns

Particular	TB Amount	Schedule Amt.	Secured Current	Unsecured		Doubtful
				Total	Non Current	
ISWARCHAND BANDMAL BURAD	2684934.00			2684934.00	0.00	2684934.00
J.K. ENTERPRISE	327550.00			327550.00	320000.00	7550.00
J.R. ENTERPRISE	5653780.00			5653780.00	65000.00	5588780.00
JASRAJ BANDMAL BURAD HUF	1869237.00			1869237.00	1869237.00	0.00
JASRAJ BANDMAL BURAD IND.	1249355.00			1249355.00	1249355.00	0.00
KANTILAL JASRAJ BURAD	1659554.00			1659554.00	120000.00	1539554.00
KANTILAL MITTULKUMAR HUF	780660.00			780660.00	50000.00	730660.00
M/S RAJENDRAKUMAR JASRAJ	361170.00			361170.00	361170.00	0.00
M/S SURESHKUMAR KUNJANKUMAR	4129369.00			4129369.00	40000.00	3729369.00
MANJUDEVI RAJENDRAKUMAR BURAD	546488.00			546488.00	54000.00	6488.00
MEENADEVI SURESHKUMAR BURAD	1229601.00			1229601.00	120000.00	1109601.00
PUSHPADEVI KANTILAL BURAD	1546107.00			1546107.00	150000.00	1396107.00
RAHUL TEXTILE	3398292.00			3398292.00	330000.00	98292.00
RAJENDRA ENTERPRISE	4358785.00			4358785.00	4356000.00	2785.00
RAJENDRAKUMAR JASRAJ BURAD	1250547.00			1250547.00	1250000.00	547.00
RAJENDRUMAR RAHULKUMAR	654157.00			654157.00	65000.00	589157.00
ROOPAMDEVI JASRAJ BURAD	1366224.00			1366224.00	1360000.00	6224.00
SAMPATRAJ ISWARCHAND BURAD	1281726.00			1281726.00	81000.00	1200726.00
SURESHKUMAR KUNJANKUMAR H	381496.00			381496.00	380000.00	1496.00
UPASHNAKUMARI D/O KANTILAL	57618.00			57618.00	0.00	57618.00
Deferred Tax						
Assets						
Employee Benefits						
Expenditure Disallowances						
Fixed Assets						
Non current						

Trial Balance Items | Drag and Drop Particulars to change groups | Save Draft | Transfer to Final Accounts | Exit

Non Editable Cells | Amount is to be classified | Load Draft | Load from Final Accounts | Back

Auto Hide Columns

Some other features to be considered :

Save Draft : To save data which you have appropriated in selected groups for further appropriations.

Load Draft: For doing work in saved draft.



Import facility procedure

Transfer to final account:

When you are clicking this option software will allow you to import ,if case of any errors done by you software will show you the same so that you can allocate particulars in appropriate groups:

The screenshot shows the 'Amount Mapping' window in Genius ver 2.14.11.1. The window title is '[Import Data From Trial Balance]'. It features a table with columns: Particular, TB Amount, Schedule Amt., Difference, IT Group, and Amount (with sub-columns for Non Current and Current). A dialog box titled 'Genius' is overlaid on the table, displaying an information icon and the message: 'Please set the particular ['SALES LOCAL 1%'] in an appropriate group.' with an 'OK' button. At the bottom of the window, there are several buttons: 'Trial Balance Items', 'Drag and Drop Particulars to change groups', 'Save Draft', 'Transfer to Final Accounts' (circled in red), 'Exit', 'Non Editable Cells', 'Amount is to be classified', 'Load Draft', 'Load from Final Accounts', and 'Back'. There is also a checkbox for 'Auto Hide Columns'.

Particular	TB Amount	Schedule Amt.	Difference	IT Group	Amount	
					Non Current	Current
Other						
ADVANCE INCOME TAX	469418.00					
TELEPHONE SECURITY	1000.00					
DVAT CARRIED FORWARD	51822.00					
Provision for Doubtful Debts						
Other Non Current Assets						
Trade Receivable						
Secured Considered Goods				Secured, considered good		
TRIBHOVANDAS BHIMJI ZAVERI DELHI P	907561.00					
AKM MEHRASONS JEWELLERS(G-25)	2654604.00					
AKM MEHRASONS JEWELLERS(UG-25)	1263603.84					
Unsecured Considered Goods						
Doubtful						
Provision For Doubtful Debts						
Others						
Earmarked Balances With Banks						
Balances With Bank Held as Marg						
Balances With Bank Held as Marg						
Balances With Bank Held as Margin Money						
Balances With Bank Held as Security agains						
Balances With Bank Held as Security agains						
Balances With Bank Held as Security agains						
Bank Deposits with more than 12 Months m						
Deposits with Financial Institution						
Inventories						
Raw Material						
Work in Progress						

Import facility procedure

Successful Data Import and preparation of Balance sheet and Profit and loss .
 After Successful completion of all steps Balance sheet and Profit and loss
 Account will be prepared automatically and are ready to print

Genius ver 2.14.11.1 - [Balance Sheet]

Particular	<input type="checkbox"/>	Notes	Current	Previous
I. EQUITY AND LIABILITIES				
(1) Shareholders' funds				
(a) Share capital	<input checked="" type="checkbox"/>	2.1	5000000.00	5000000.00
(b) Reserves and surplus	<input checked="" type="checkbox"/>	2.2	1973858.82	-790848.33
(c) Money received against share warrants	<input checked="" type="checkbox"/>	2.3	120000.00	0.00
(2) Share application money pending allotment	<input checked="" type="checkbox"/>	2.4	200000.00	200000.00
(3) Non-current liabilities				
(a) Long-term borrowings	<input checked="" type="checkbox"/>	2.5	35547659.80	39312474.00
(b) Deferred tax liabilities (Net)	<input checked="" type="checkbox"/>	2.6	3984668.00	520000.00
(c) Other Long term liabilities	<input checked="" type="checkbox"/>	2.7	120000.00	130000.00
(d) Long-term provisions	<input checked="" type="checkbox"/>	2.8	220000.00	250000.00
(4) Current liabilities				
(a) Short-term borrowings	<input checked="" type="checkbox"/>	2.9	231000.00	7666437.27
(b) Trade payables	<input checked="" type="checkbox"/>	3.0	8555833.00	19667895.00
(c) Other current liabilities	<input checked="" type="checkbox"/>	3.1	886407.00	4891770.00
(d) Short-term provisions	<input checked="" type="checkbox"/>	3.2	687163.00	445809.00
TOTAL			57526589.62	77293536.94
II. ASSETS				
Non-current assets				
(1) (a) Fixed assets				
(i) Tangible assets	<input checked="" type="checkbox"/>	3.3	32975068.00	35075452.00
(ii) Intangible assets	<input checked="" type="checkbox"/>	3.4	2598924.67	2577093.13
(iii) Capital work-in-progress	<input type="checkbox"/>			
(iv) Intangible assets under development	<input type="checkbox"/>			
(b) Non-current investments	<input checked="" type="checkbox"/>	3.5	200000.00	200000.00
(c) Deferred tax assets (net)	<input type="checkbox"/>			
(d) Long-term loans and advances	<input checked="" type="checkbox"/>	3.6	120000.00	135805.00
(e) Other non-current assets	<input checked="" type="checkbox"/>	3.7	1589923.56	1591359.60
(2)				
Current assets				
(a) Current investments	<input type="checkbox"/>			

Press F4 for Print Details / List Setup / Import

M E N U

Difference : 0.00 | 0.00

Thank You