

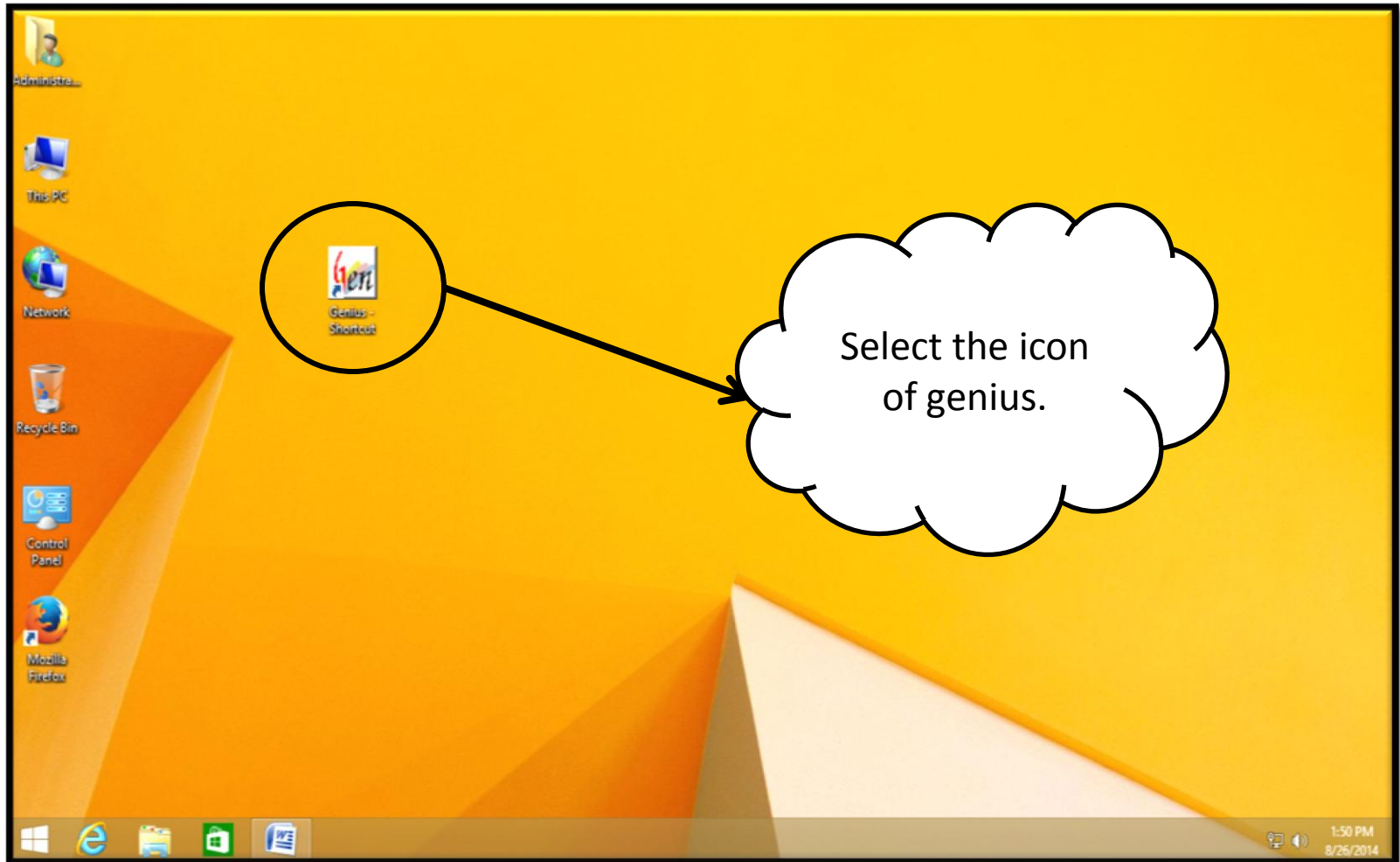
HELP MANUAL
FOR

**FOR FACING ISSUES FOR PRINT PREVIEW IN
WINDOWS 8 AND HIGHER VERSTION**

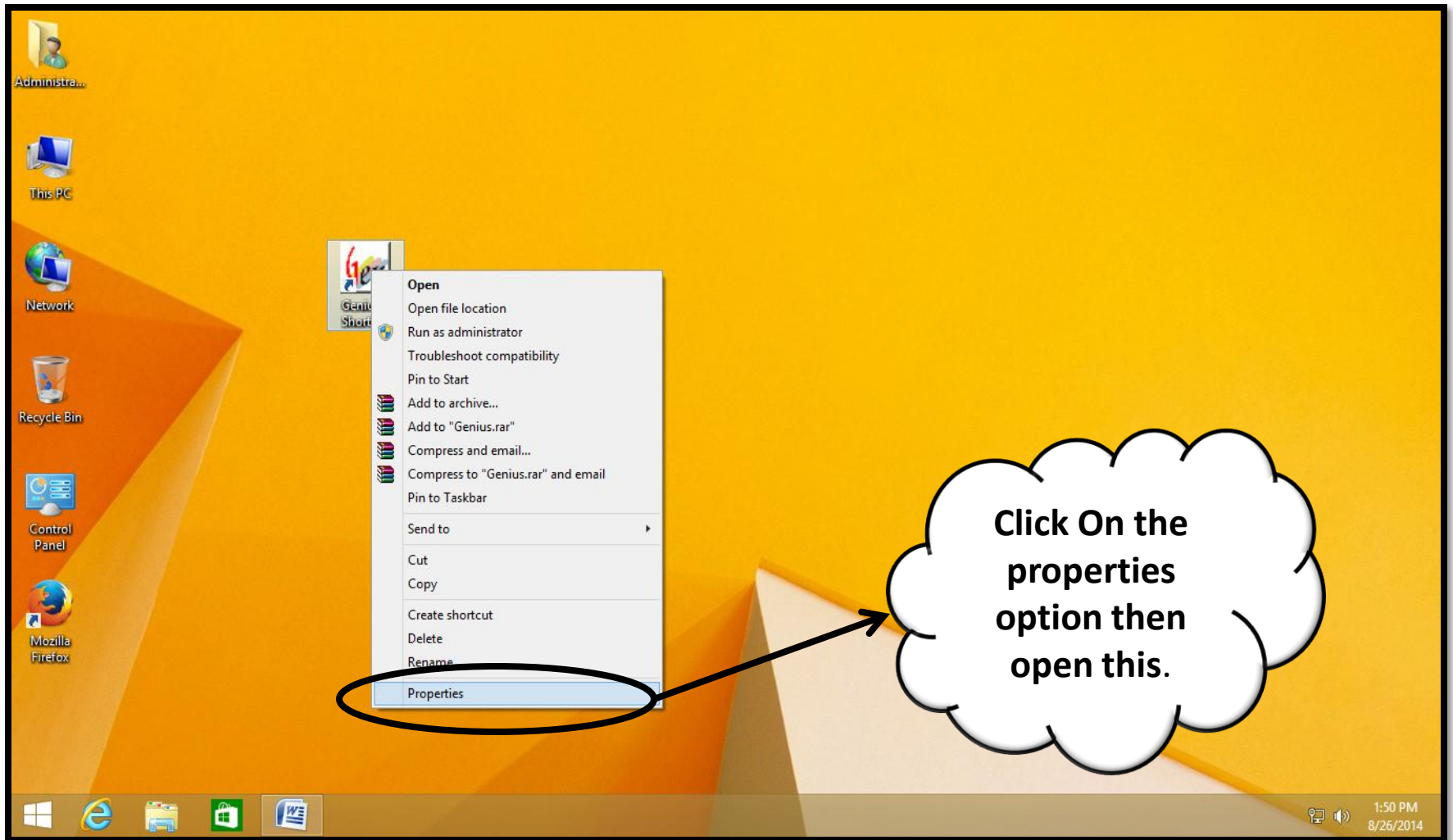
SAG Infotech Private Limited

Soft solutions for those can not afford to make errors.

Go to desktop icon of software on your system...

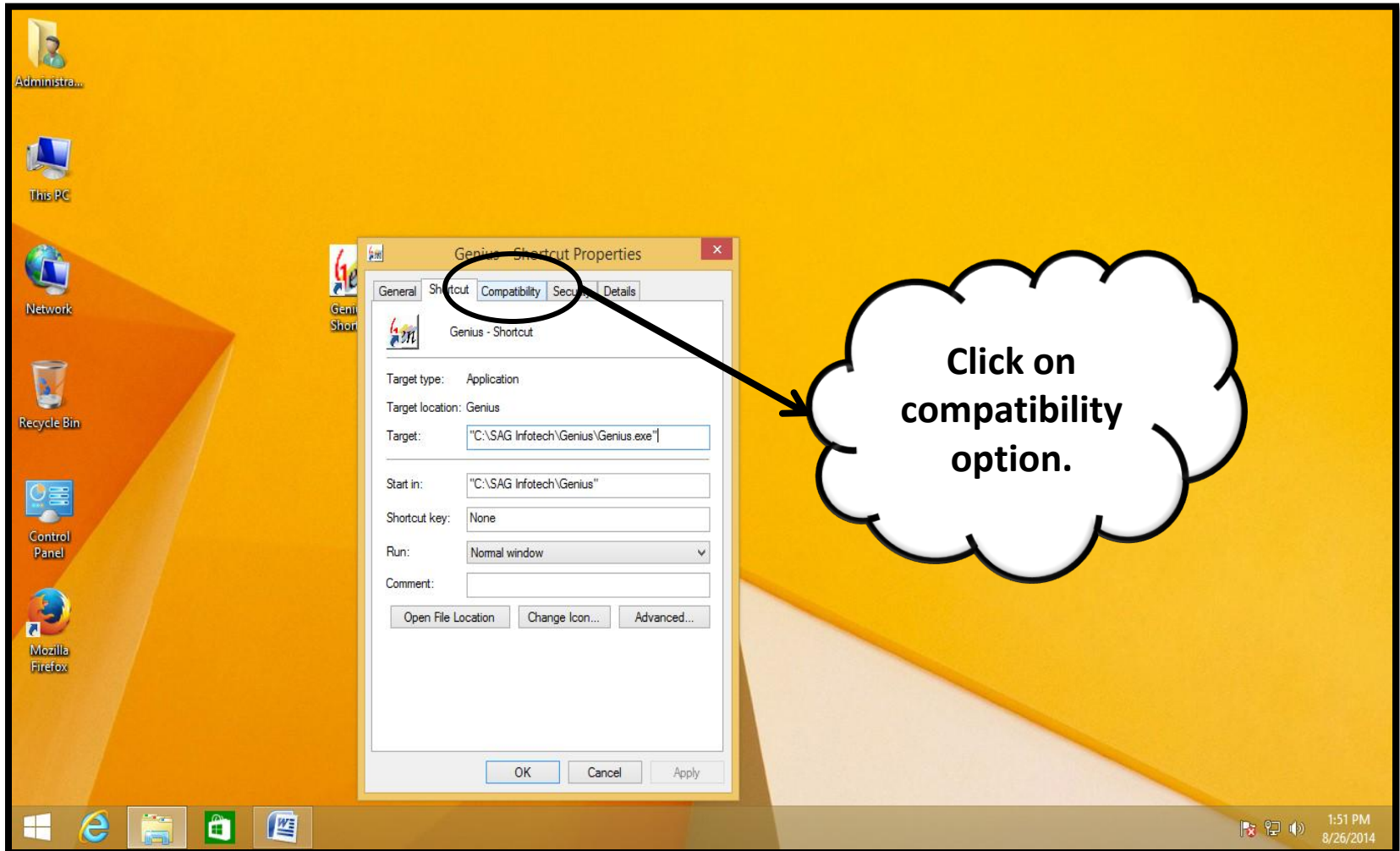


Procedure Go to the properties then open it.

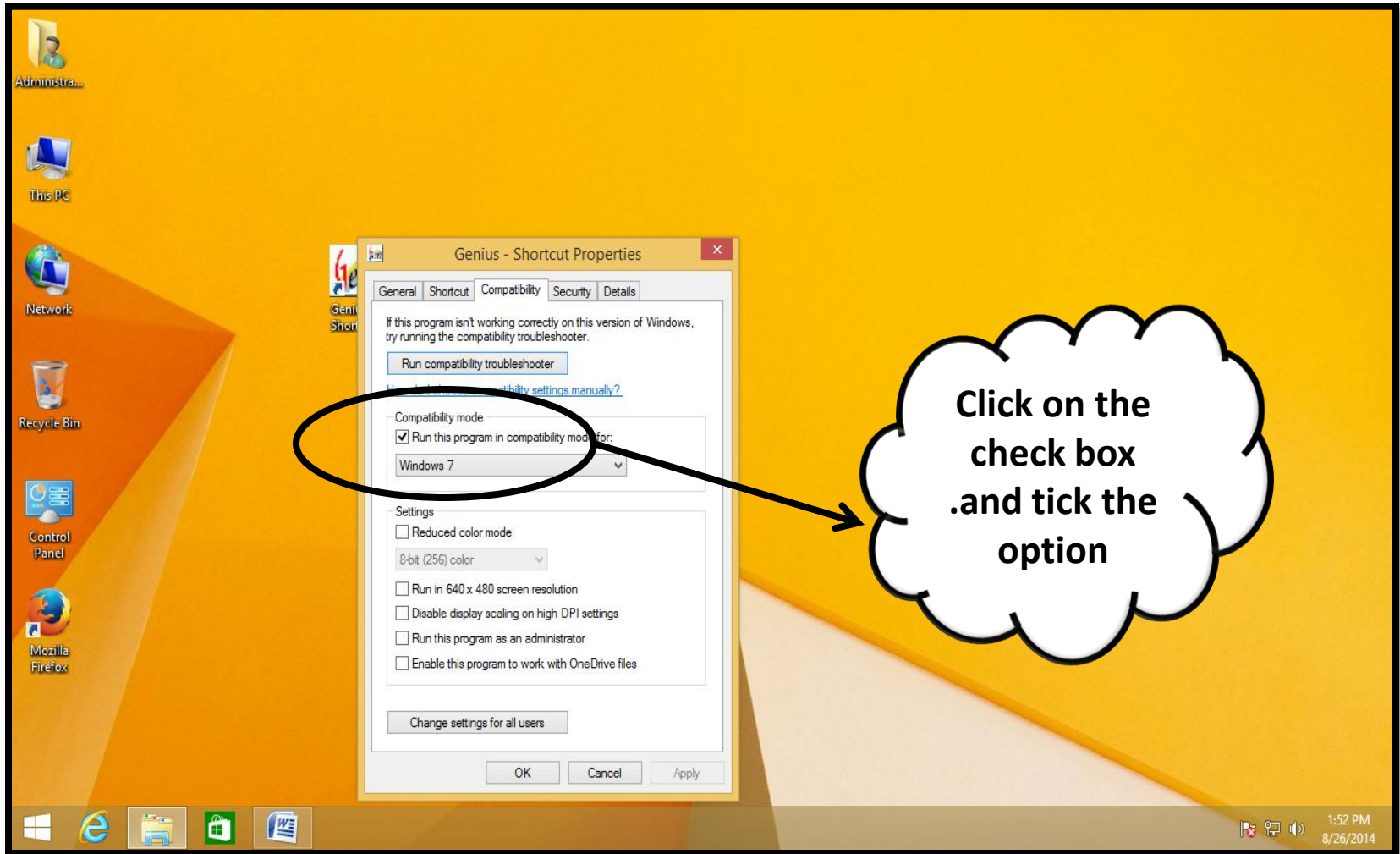


Procedure

Then click on the option compatibility and open it.

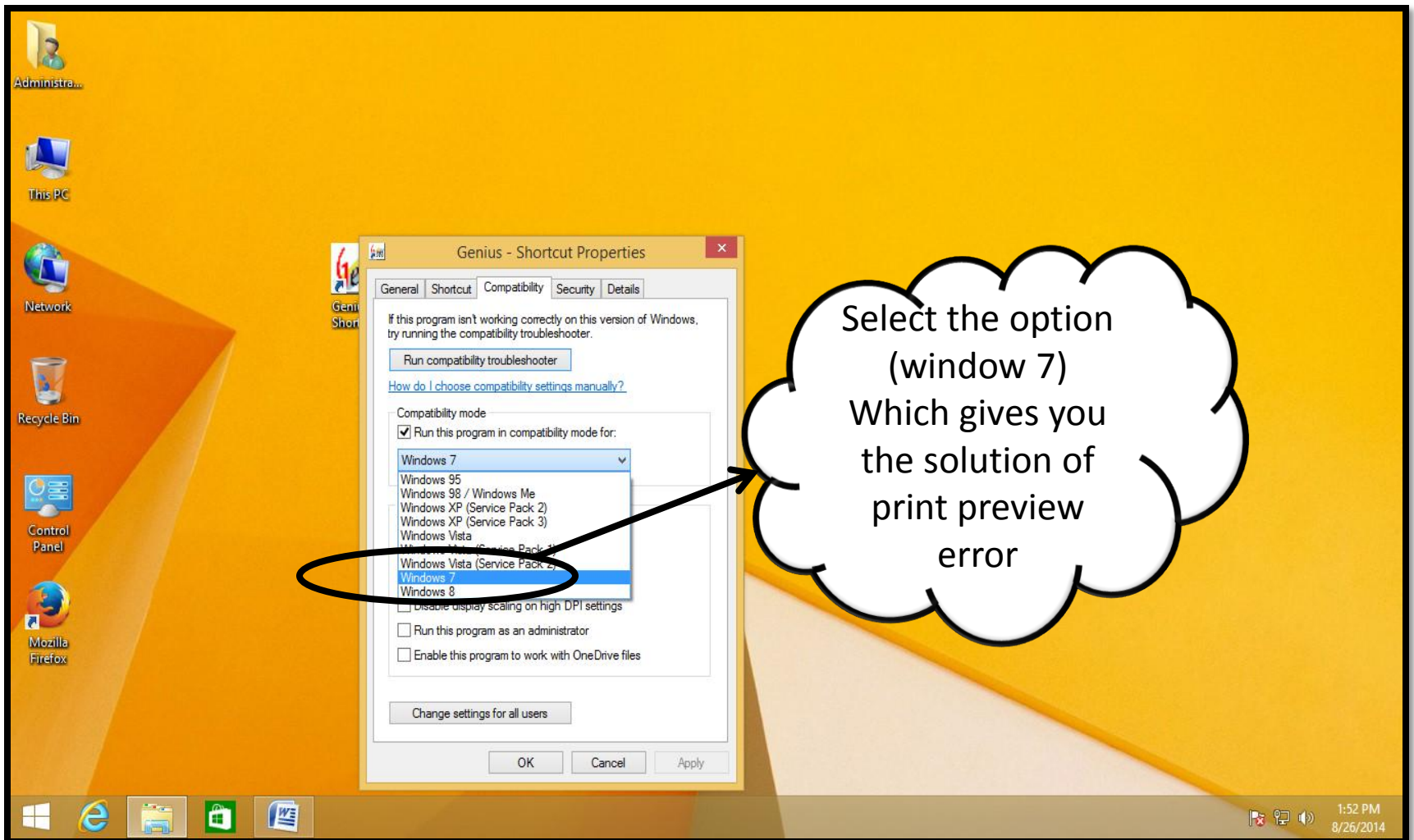


Procedure
there is a portion compatibility mode then click on the check
box option
(run this program for the compatibility mode)



Procedure

when you click on the drop down box select the option (window 7) for the solution of print preview error .



The image shows a Windows 8 desktop environment with a yellow background. A dialog box titled "Genius - Shortcut Properties" is open, displaying the "Compatibility" tab. The "Run this program in compatibility mode for:" checkbox is checked, and the dropdown menu is open, showing a list of operating systems. "Windows 7" is selected and highlighted in blue. A black callout bubble with a white background and a black border contains the text: "Select the option (window 7) Which gives you the solution of print preview error". An arrow points from the bubble to the "Windows 7" option in the dropdown menu. The desktop includes icons for "Administrators", "This PC", "Network", "Recycle Bin", "Control Panel", and "Mozilla Firefox". The taskbar at the bottom shows the Start button, Internet Explorer, File Explorer, Mail, and Word. The system tray in the bottom right corner shows the time as 1:52 PM and the date as 8/26/2014.

Thanks for using
Our Product and services!